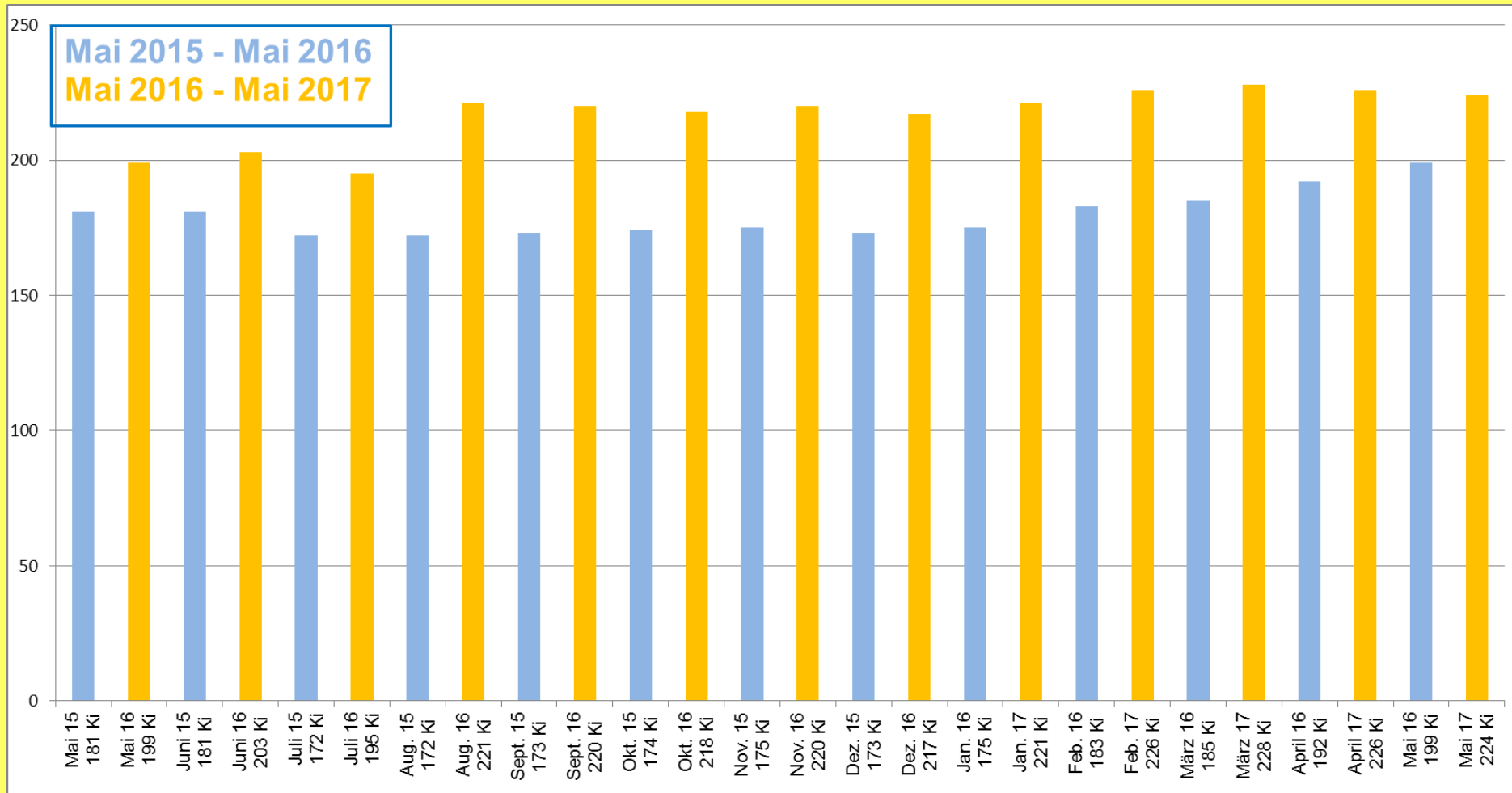
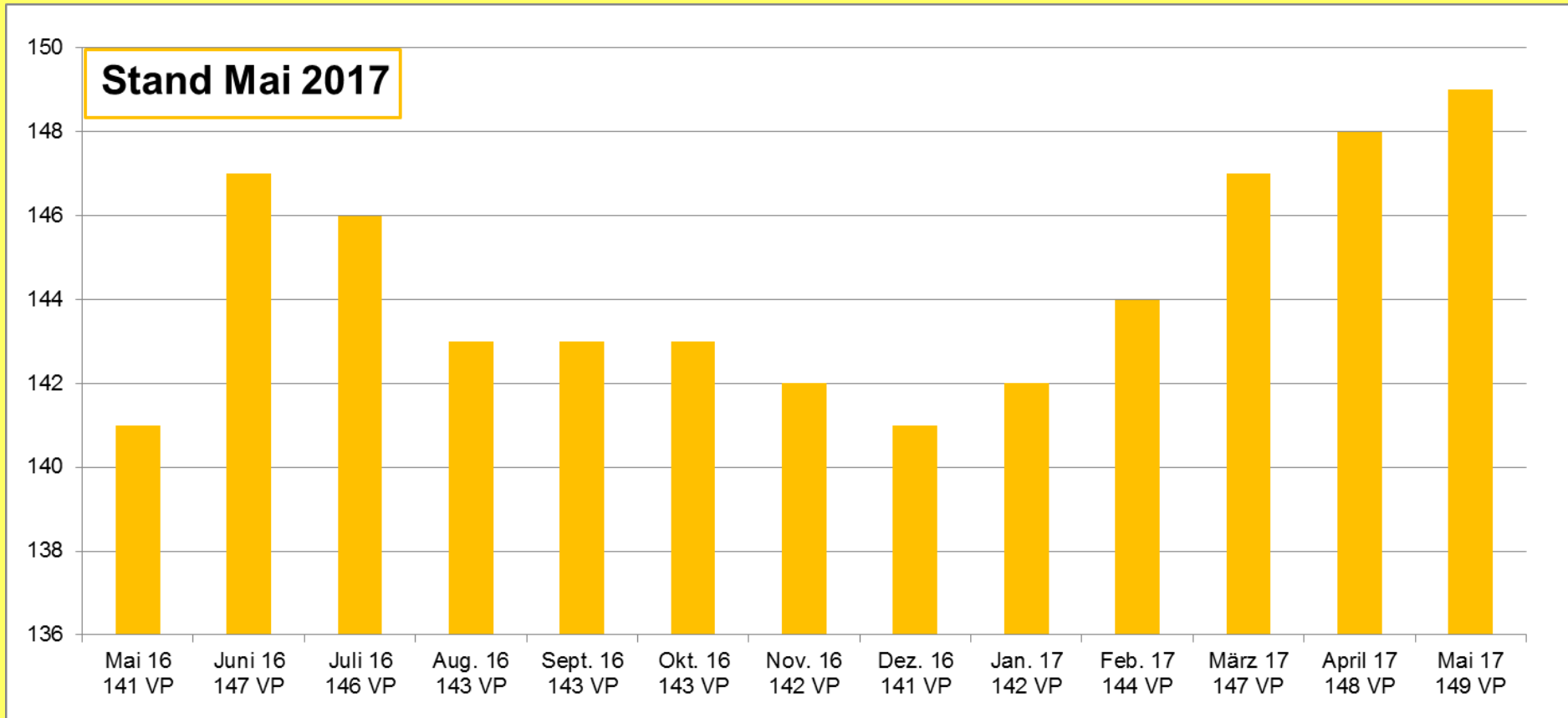


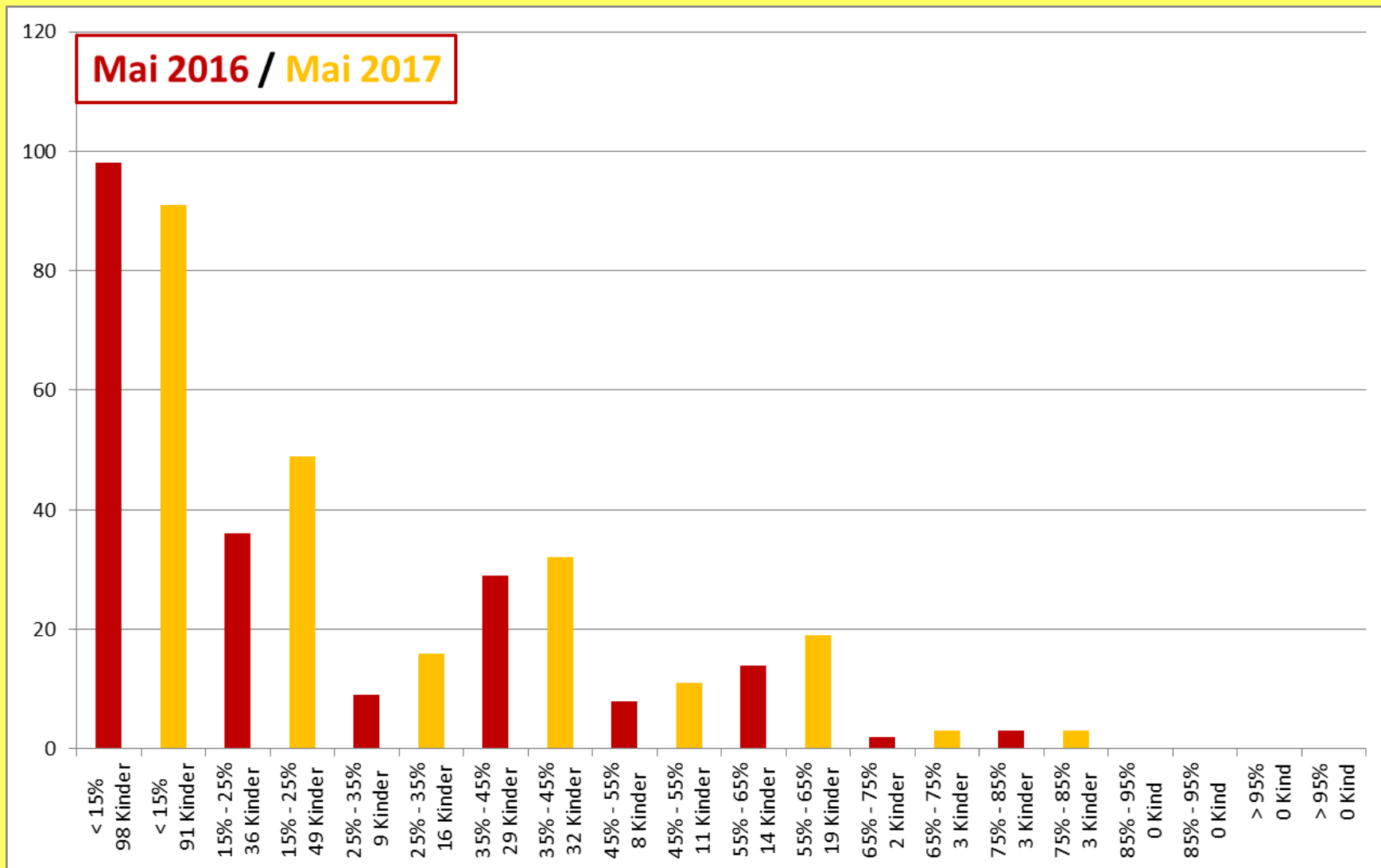
# Anzahl Kinder / Jugendliche (ohne Randstundenkinder)



# Aktive Vertragspartner

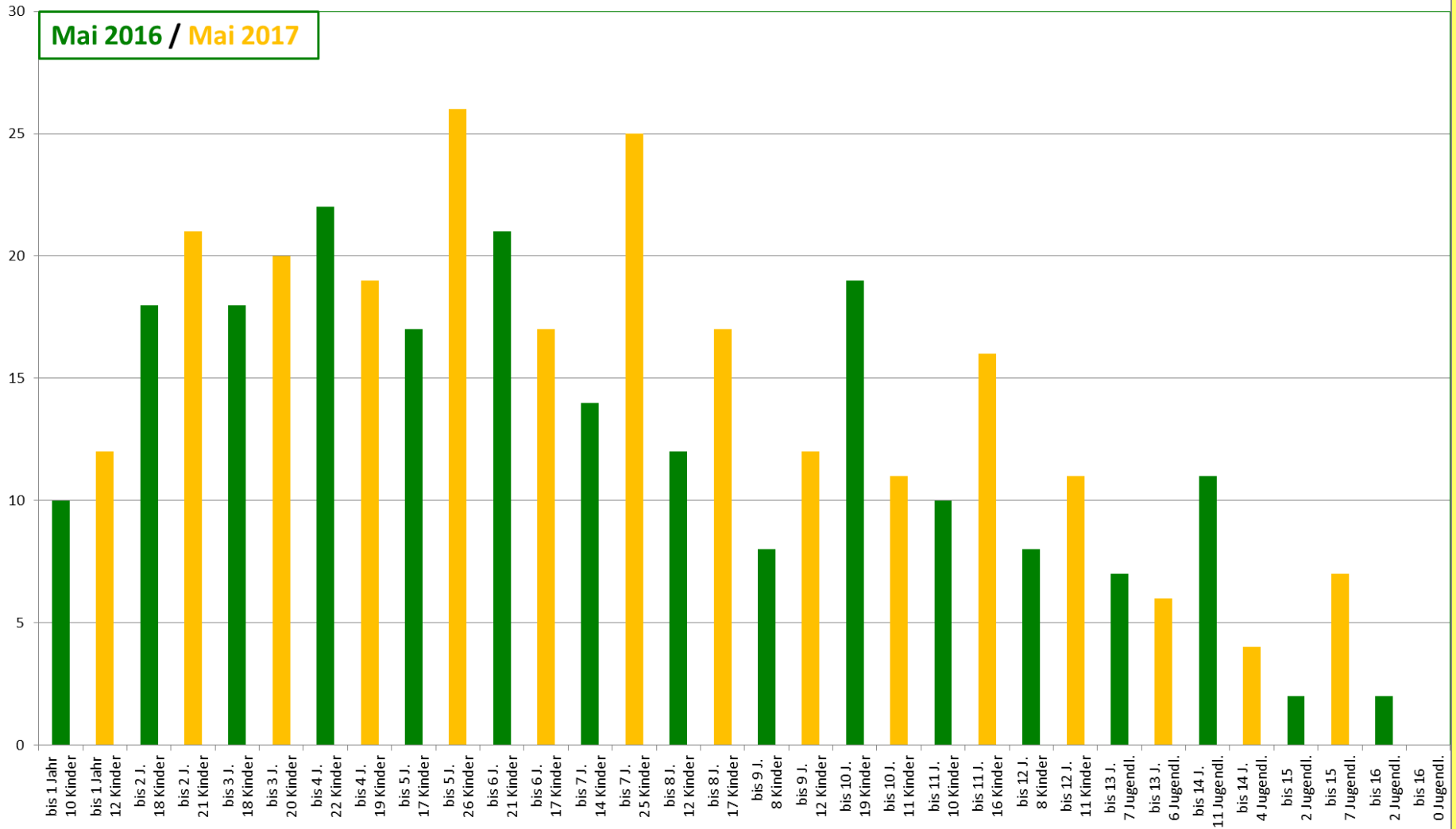


# Kita-Besuch in Prozenten (ohne Randstundenkinder)



# Alter Kinder / Jugendliche (ohne Randstundenkinder)

Mai 2016 / Mai 2017



# Anteil angemeldete Mädchen / Jungen

